

Professional Pet Force Dryer Owner's Manual

Secador profesional de fuerza para mascotas manual de usuario

Séchoir professionnel puissant d'animaux manuel d'emploi

Model/Modelo/Modèle:

B-4, B-123, B-24, B-163, B-27

220-240V~, 50Hz

Read and save these instructions

Lea y guarde estas instrucciones

Lisez et épargnez ces instructions



Read and save these instructions

www.xpower.com | www.tx-5.com.hk

Index: EU-1-A14

Edition: 1.0.Final

Safety Instructions

WARNING: READ AND SAVE THESE INSTRUCTIONS BEFORE USING THIS PRODUCT.

When using electrical appliances, especially when children or animals are present, basic safety precautions should always be followed to reduce the risk of fire, electric shock, and personal injury, including, but not limited to the following:

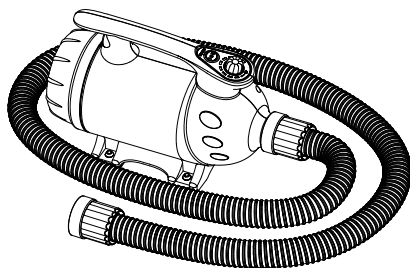
- **DO NOT** use attachments not intended for use with the dryer. Only use attachments recommended or sold by the manufacturer.
- **DO NOT** attempt to perform any service or maintenance not outlined in instruction manual.
- **WARNING:** To reduce the risk of electric shock – Use indoors only. **DO NOT** use outdoors.
- **WARNING:** This Pet Dryer is not intended for use by children. Adult assembly and operation required. To reduce the risk of injury, close supervision is necessary when an appliance is used near children.
- **DO NOT** use as a toy.
- **DO NOT** leave appliance when plugged in. Unplug from outlet when not in use and before servicing.
- **DO NOT** use extension cords with dryer.
- **DO NOT** unplug unit by pulling on cord, to unplug, grasp the plug, not the cord.
- **WARNING:** Never use dryer with a damaged cord or plug, or after the appliance malfunctions or is dropped, damaged. Return to an authorized service center for service, examination, repair, or electrical or mechanical adjustment.
- To disconnect, turn all controls to the off (“O”) position, then remove plug from outlet.
- **DO NOT** pull or carry by cord, use cord as a handle, close a door on cord, or pull cord around sharp edges or corners. **DO NOT** run appliance over cord. Keep cord away from heated surfaces.
- **DO NOT** handle plug or appliance with wet hands.
- Use extra care when cleaning on stairs.
- **DANGER: DO NOT** expose dryer to rain or water.
- **DO NOT** use or store dryer where it can fall or be pulled into tub or sink or standing water. If dryer falls into water, unplug it, **DO NOT** reach into the water. Keep units out of baths and **DO NOT** operate on a wet floor, or wet surface.
- **DO NOT** use to pick up flammable or combustible liquids, such as gasoline, or use in areas where they may be present. **DO NOT** pick up anything that is burning or smoking, such as cigarettes, matches, or hot ashes.
- Unplug before connecting nozzles and hose.
- **WARNING: DO NOT** put any object into dryer openings. Keep loose clothing, jewelry and hair away from dryer openings. **DO NOT** use with any opening blocked; keep free of dust, lint, hair, and anything that may reduce air flow.

Safety Instructions (Continued)

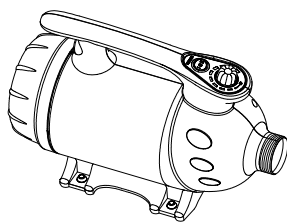
- **WARNING: DO NOT** allow any material to clog or block air intakes as this may cause units to overheat and result in a fire or electrical hazard. Regularly clear hair or other substances from air intakes. **DO NOT** contact moving parts.
- Connect to a properly grounded outlet only. See Grounding Instructions.

Professional Pet Force Dryer Introduction

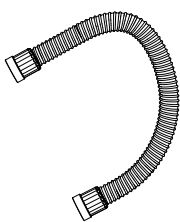
- The XPOWER Professional Pet Force Dryer produces high velocity airflow with adjustable volume for fast water removal in pet grooming.
- It's ideal for force drying in the tub. With natural motor heat or additional heat options, and the variable speed control, it can also complete finish drying jobs on the table.



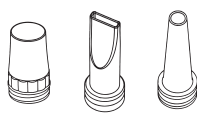
Items Included



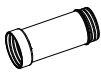
• Pet Dryer x 1



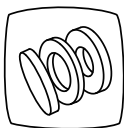
• Hose x 1



• Nozzles x 3



• Nozzle Connector x 1*



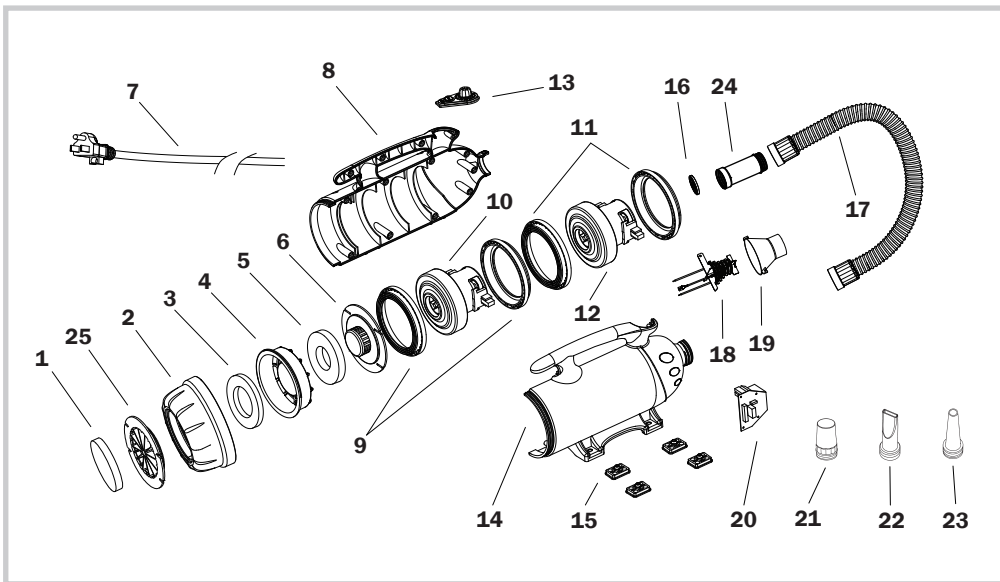
• Extra Filter Set x 1



• Owner's Manual x 1

* For model B-123 and B-163 only.

Parts Description



- | | | |
|---------------------|--------------------------|-------------------------------|
| (1) Inlet Filter | (10) Motor | (19) Heating Element Tunnel** |
| (2) Rear Cover*** | (11) Motor Sleeves* | (20) PCB Board |
| (3) Case Filter*** | (12) Motor* | (21) Round Nozzle |
| (4) Dust Case*** | (13) Switch Plate | (22) Flat Nozzle |
| (5) Motor Filter | (14) Left Housing | (23) Cone Nozzle |
| (6) Dustproof Cover | (15) Rubber Feet | (24) Nozzle Connector**** |
| (7) Power Cord | (16) Outlet Grille Cover | (25) Inlet Grille Cover**** |
| (8) Right Housing | (17) Hose | |
| (9) Motor Sleeves | (18) Heating Element** | |

* For model B-163 and B-27 only.

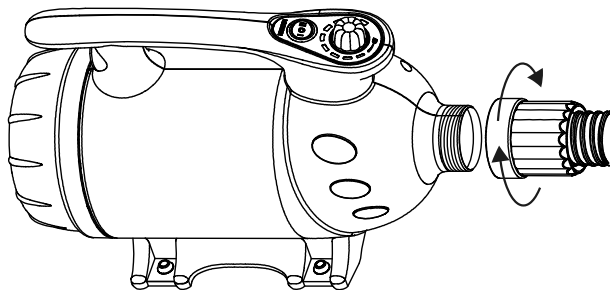
** For model B-123 and B-24 only.

*** For model B-4, B-24 and B-27 only.

**** For model B-123 and B-163 only.

Installation and Operation Guide

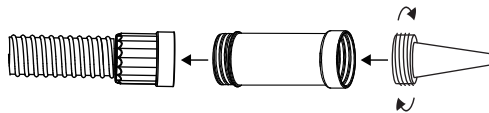
Hose Installation



- Screw the hose into the air outlet of the dryer. Fasten the connection.

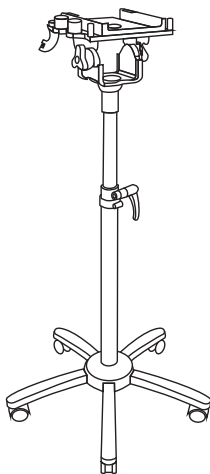
Installation and Operation Guide (Continued)

Nozzle Installation



- Screw the desired nozzle in nozzle adapter to the end.
- For model B-123 and B-163, connect the nozzle connector in between the nozzle adapter and the nozzle.

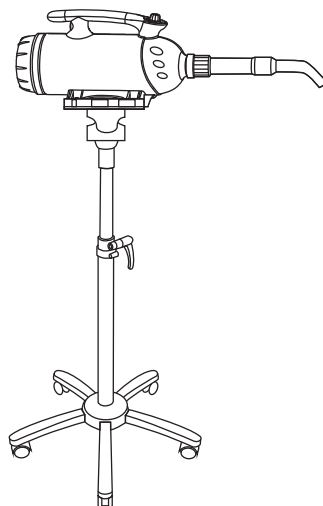
Extension Setup



**Stand Mount Kit
(B-SMK-3)**



**Stand
Conversion Arm
(B-SCA)**



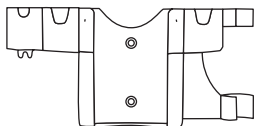
Stand Conversion

- You can equip the Pet Dryer to Stand Mount Kit and a Stand Conversion ARM for convenient hands-free use.

* The Stand Mount Kit (B-SMK-3) and Stand Conversion Arm (B-SCA) are sold separately.

Installation and Operation Guide (Continued)

Extension Setup (Continued)

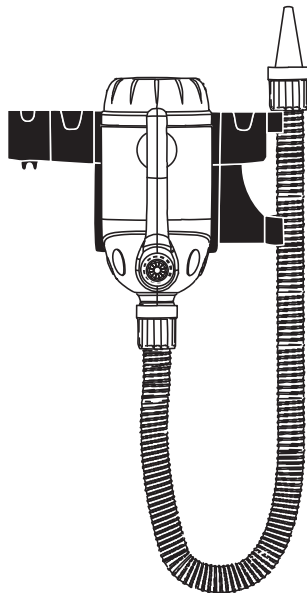


Wall Mount Kit*
(B-WMK-2)

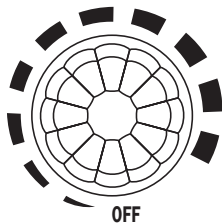
Wall Mounted

- You can mount the Pet Dryer to the wall with a Wall Mount Kit for space-saving and convenient use.

* The Wall Mount Kit (B-WMK-2) is sold separately.

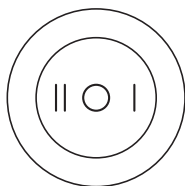


Switch Plate



Speed Switch

- Turn to “**OFF**” position to switch the Pet Dryer off. Turn to any speed position to switch the Pet Dryer ON.
- Turn clockwise to set the desired speed.



Heater Switch

- Switch to “**O**” setting to turn the heating element OFF.
- Switch to other settings to turn the heating element on. “**I**”/“**II**” means the lower/higher heat setting.

Installation and Operation Guide (Continued)

Start Your Job

Before Turning on the Pet Dryer:

Please hold the hose tightly and point the nozzle outlet to a safe area.

Force Drying Stage

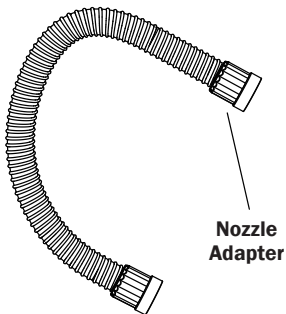
- In this stage, pets have been bathed and are saturated with heavy water. High-pressure airflow can remove the heavy water efficiently.
- You can achieve high-pressure air by installing the cone nozzle or flat nozzle and dry at the highest speed setting of the machine.

Table/Finish Stage

- In this stage, most of the heavy water on the pets have been removed in the force drying stage, but there is still some moisture. Heated-temperature and high-volume soft airflow can help to vaporize the rest of the moisture or to fluff and style.
- For model B-24 and B-123, you can achieve high temperature airflow by using the heating element. For other models, turn to the highest speed setting for around 10 minutes for motor-heated airflow.
- To achieve high-volume soft airflow, switch to round nozzle and reduce the speed of the machine.

Nozzle Selections

- The cone nozzle is used for the force drying stage when the concentrated airflow with high pressure is needed.
- The flat nozzle is used for long coated (such as silky coat and natural long hair) pets to prevent knotting in the drying process.
- The round nozzle allows higher volume and softer airflow with less noise for smaller pets, sensitive areas or finishing and styling drying process.



Tips

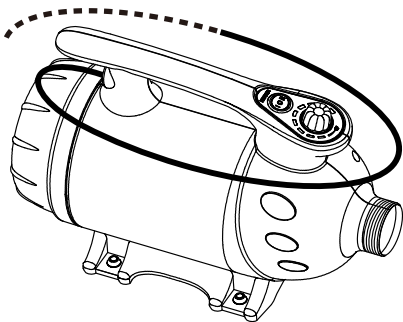
- For pets that are sensitive to noise, try to start with the lowest speed setting and round nozzle. Then apply desired speed and other nozzles gradually.
- Hold the nozzle adapter or nozzle connector to avoid the hot areas of the hose.

User Maintenance and Servicing Instructions

Frequent maintenance is recommended on this appliance. Failure to follow the maintenance instructions may cause failure of the appliance and void the warranty.

- When not in use, unplug and store the appliance in a dry and cool indoor place. Make sure it's out of reach of children.
- Before performing any maintenance or cleaning, always disconnect the Pet Dryer from its power source.
- Use a damp cloth to wipe the surface of the housing. Do not clean the unit with water directly.
- Check if the grille covers are clean. Remove dirt or any other objects that could block the air inlet and air outlet.

Organize the Cord



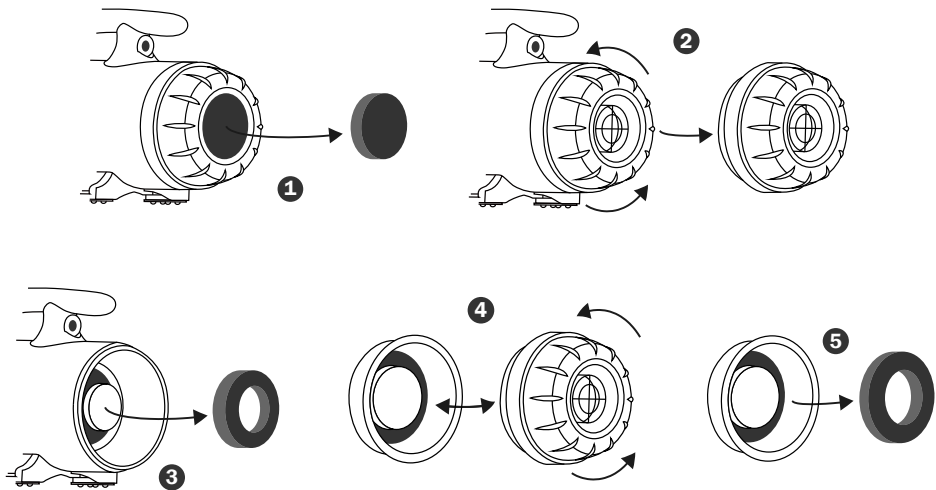
- Wrap the power cord around the handle on top of the housing for storage after use.
- Use the strap at end of cord to secure in place.

Nozzle Maintenance

- Check if the nozzles are clean. Remove dirt or any other objects that could block the nozzle.
- Store the nozzle in a sealed container and put the container in a dry and cool indoor place. Make sure it's out of reach of children.

User Maintenance and Servicing Instructions (Continued)

Filter Maintenance



Three filters are on rear (intake) of the machine. To ensure the best performance, you should clean or replace the filters frequently. (See Also Page 5: *Parts Description*). Follow the below instructions to take out the filters:

For model B-123 and B-163:

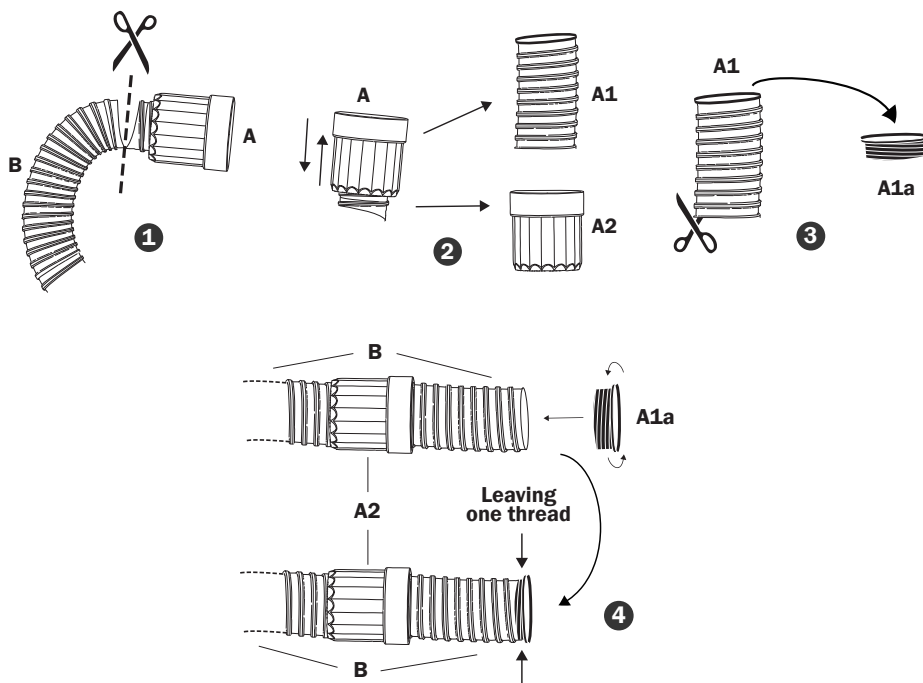
- ① Take out the intake filter right from the end of the Pet Dryer.

For all other models:

- ① Take out the intake filter right from the end of the Pet Dryer.
- ② Screw off the rear cover.
- ③ Take out the motor filter from the machine.
- ④ Screw off the dust proof cover from the rear cover.
- ⑤ Take out the case filter from the dust case.

User Maintenance and Servicing Instructions (Continued)

Hose Maintenance



Always keep the hose away from chemicals, sunlight, ultraviolet ray, extreme temperature and sharp edges.

If your hose breaks, it could be fixed by the following methods:

- ① Cut out the broken hose into two ends, A and B.
- ② Take out A1 from A2.
- ③ Open A1 with scissors, and get A1a.
- ④ Insert B into A2. Screw A1a onto B, leaving one thread of space.

Troubleshooting Guide

PROBLEM	POSSIBLE CAUSE	SOLUTION
Pet Dryer does not start	No electricity.	Check for power supply.
	The power cord is not properly plugged in.	Remove and reconnect the power cord.
	The circuit breaker of the power socket or power circuit jumps.	Disconnect the Pet Dryer to the power socket. Reset the circuit breaker and reconnect.
	The thermal switch is triggered.	Turn off and unplug the machine. Clean or replace the filters. Plug and use again after the machine totally cools down.
Unit runs but the speed / noise is abnormal	Air inlet or air outlet is blocked.	Remove blockage, clean or replace the filters.
	Carbon brushes of the motor are worn out.	Contact XPOWER for more assistance.
	Leakage on the hose.	Try to fix the leakage or replace the hose. <i>(See Page 13: Hose Maintenance)</i>
Unit runs but the machine gets very hot	The motor produces heat and heats up the machine after a long time use.	Turn off the machine. Use again after the machine totally cools down.

If troubleshooting does not resolve your problem, please contact XPOWER or other parties authorized by XPOWER for further instructions.

Technical Specification

MODEL NUMBER	B-4	B-123	B-24	B-163	B-27
Voltage/ Frequency	220-240V~, 50Hz				
Power	1200 W	1600 W	1800 W	2200 W	2500 W
Rated Airflow	150 CFM			180 CFM	
Speed Control	Variable Speed				
Heating Element	N/A	2 Settings		N/A	
Hose Length	2.4 m				
Cord Length	3.0 m				
Housing	ABS				ABS+PC
Unit Dimension (L) x (W) x (H)	36.0 17.0 x 24.0 cm	30 x 16.0 x 23.0 cm	35.5 x 16.0 x 23.4 cm	39.6 x 16.0 x 23 cm	45.0 x 16.0 x 23.5 cm
Unit Weight	4.9 kg	3.9 kg	4.0 kg	6.0 kg	5.9 kg
Safety Certification	CE/UKCA				

If your product(s) is not listed above, please visit www.xpowermfr.com for more information.

XPOWER Limited Warranty

1 YEAR LIMITED WARRANTY

XPOWER-branded products purchased in the U.S. from authorized distributors include a 1-year limited warranty. Contact XPOWER to confirm warranty information about your product(s).

This limited warranty covers defects in materials and workmanship in your XPOWER-branded products. Contact an XPOWER Distributor in your region for warranty service and parts replacement.

Items mentioned but not limited to below are not covered by warranty:

- (1) Power cord, batteries, filters or any other components considered as a “consumable parts” by XPOWER.
- (2) Normal wear and tear.
- (3) Problems that result, directly or indirectly, at XPOWER’s sole discretion, from:
 - (3.1) External causes such as accident, abuse, misuse or problems with electrical power supply.
 - (3.2) Disassembling, servicing or modification not authorized by XPOWER.
 - (3.3) Usage that is not accordant with product instructions stated in Owner’s Manual.
 - (3.4) Failure to follow the product instructions or lack of necessary maintenance stated in Owner’s Manual.



XPOWER Manufacture, INC.

668 S. 6th Ave., City of Industry,
San Gabriel, CA 91776 USA

Read and save these instructions
Lea y guarde estas instrucciones
Lisez et épargnez ces instructions
www.xpower.com | www.tx-5.com.hk