

Drum Fan Owner's Manual

Model:
FD-630D

220-240V~, 50Hz



Read and save these instructions
www.xpower.com | www.tx-5.com.hk

Index: EU-1-A3
Edition: 1.0.Final

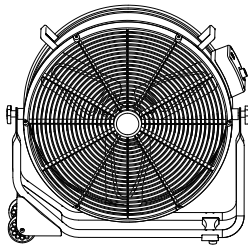
Safety Instructions

WARNING - READ AND SAVE THIS INSTRUCTIONS BEFORE USING THIS PRODUCT.

The user of electrical products may create hazards that include, but are not limited to injury, fire, electrical shock. Failure to follow these instructions may damage and/or impair its operation and void the warranty.

- Before operating, remove all packaging material and check for any damage that may have occurred during shipping or any missing items.
- Check household power supply to ensure it matches the appliance's specification.
- **DO NOT** operate any fan with a damaged cord or plug. Discard fan or return it to an authorized service facility for examination and/or repair.
- **DO NOT** run cord under carpeting. **DO NOT** cover cord with throw rugs, runners, or similar coverings. **DO NOT** route cord under furniture or appliances. Arrange cord away from traffic area and where it will not be tripped over.
- Suitable for use with solid state speed control.
- **DO NOT** touch this appliance or the plug with wet hands or while standing in water.
- **DO NOT** operate the appliance in any pooled water.
- **DO NOT** use the product in areas where gasoline, paint or other flammable goods and objects are used or stored.
- **DO NOT** insert or allow objects to enter any ventilation or exhaust opening as this may damage the appliance and void the warranty.
- **DO NOT** cover the air inlet or outlet on the appliance.
- **DO NOT** direct the air flow at human faces or bodies.
- **DO NOT** allow children to play around or with this appliance.
- **AUTOMATICALLY OPERATED DEVICE** – To reduce the risk of injury, disconnect from power supply before servicing.
- Remove the power cord from the electrical receptacle by grasping and pulling on the power cord plug-end only, **DO NOT** pull the cord directly.
- **DO NOT** attempt to repair or adjust any electrical or mechanical functions of this appliance, as this may cause danger and void the warranty.
- If the appliance is damaged or it malfunctions, **DO NOT** continue to use it. Unplug the product from the electrical outlet. Refer to troubleshooting guide or contact XPOWER.
- Store in a dry area, away from exposure to sunlight, extreme temperature and humidity, or other extreme environments, when not in use.
- An electronic instruction manual can be obtained through manufacture's website www.xpower.com.

Items Included

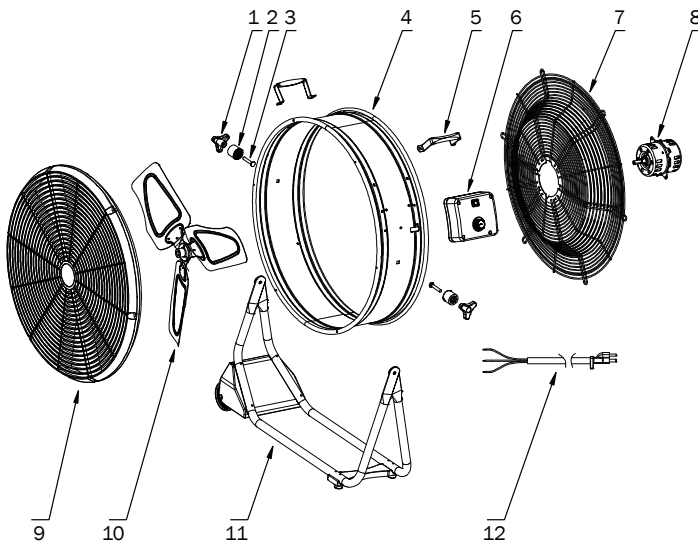


• Drum Fan x 1



• Owner's Manual x 1

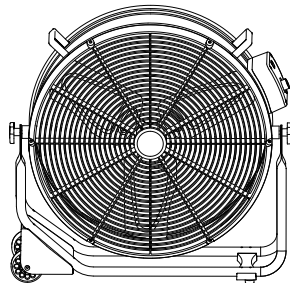
Parts Description



- | | | |
|------------------|---------------------------|------------------------|
| (1) Rack Handle | (5) Housing Handle | (9) Front Grille Cover |
| (2) Friction Pad | (6) Switch Plate | (10) Fan |
| (3) Screw M8X50 | (7) Rear Air Grille Cover | (11) Rack |
| (4) Housing | (8) Motor | (12) Power Cord |

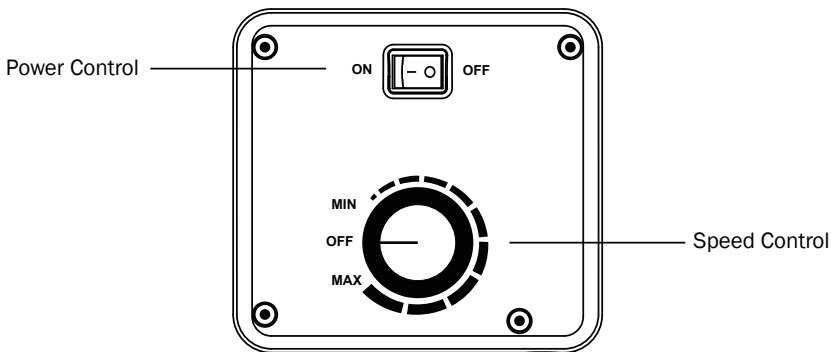
Drum Fan Introduction

- XPOWER Drum Fans are designed to create a cool zone for both indoor and outdoor with its huge amount of “natural feeling” airflow and efficient powerful brushless DC motor.
- It's perfect for indoor and outdoor activities and events where efficient ventilation, cooling or even stage effects of wind are needed.
- The brushless DC motor technology allows efficient airflow output with less energy than conventional motors as well as a wide range airflow adjustment from .



Operation Guide

SWITCH PLATE



Power Control

- Switch to **“OFF”** position to disconnect the drum fan from the power. Switch to **“ON”** position to connect the drum fan from the power.

Speed Control

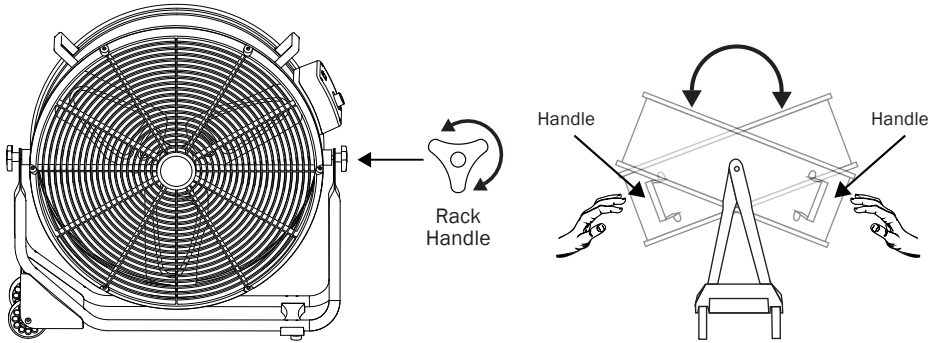
- Turn to **“OFF”** position to switch the drum fan OFF. Turn clock-wisely to any position between **“MIN”** and **“MAX”** to switch the drum fan ON.
- You can adjust to any desired speed variably.

IMPORTANT

- When finished, turn the speed control to **“OFF”** position to switch the drum fan OFF first, and then turn off the power control,unplug the cord from the outlet. Follow this correct shutdown process to disconnect the drum fan. The fan contains precise parts and delay start program, please wait for over 5 seconds until the drum fan totally starts.

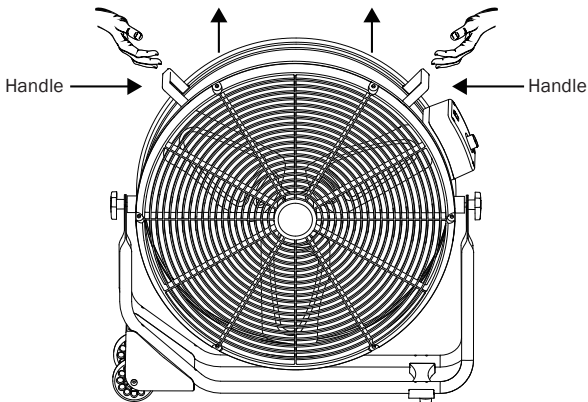
Operation Guide (Continued)

Adjust Operating Position



- The position of the drum fan is held by the rack handles on the rack.
- To adjust the operating position, turn anti-clock-wisely to loosen the rack handle and then use the handle to rotate the drum fan and adjust to desired position.
- Turn clock-wisely to fasten the rack handle and hold the position of the drum fan. Make sure it's tight enough when the fan is working.

Transportation

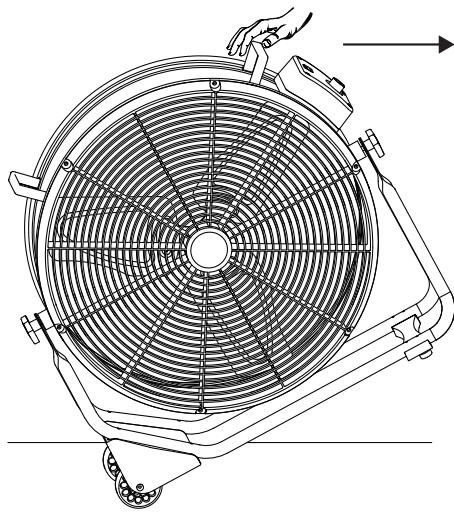


Lift with Handles

- Lift the drum fan with the two handles on the top.
- Be aware of the weight of the machine.

Operation Guide (Continued)

Transportation (Continued)



Transport on Wheels

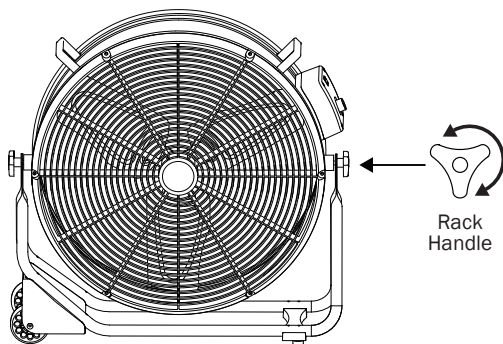
- Lift the drum fan with the handle shown on the left.
- Pull with the handle and transport the drum fan.

User Maintenance Instructions

Frequent maintenance is recommended on this appliance. Failure to follow the maintenance instructions may cause failure of the appliance and void the warranty.

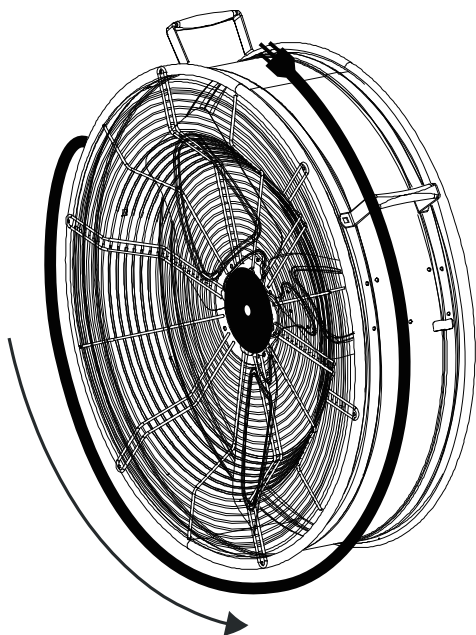
- When not in use, unplug and store the appliance in a dry and cool indoor place. Make sure it's out of reach of children.
- Before performing any maintenance or cleaning, always disconnect the air mover from its power source.
- Use a damp cloth to wipe the surface of the housing. Do not clean the unit with water directly.
- Check if the grille covers are clean. Remove dirt or any other objects that could block the air inlet and air outlet.

User Maintenance Instructions(Continued)



Fasten the Rack Handles

- To prevent possible injury, when you finish using this appliance, please position the drum fan **UPRIGHT**.
- Fasten the rack handle to lock the position of the drum fan.



Organize the Power Cord

- Wrap the power cord around the housing, close to rear of the drum fan.
- Attach the cord with the strap on the cord.

Troubleshooting Guide

PROBLEM	POSSIBLE CAUSE	SOLUTION
Drum fan does not start	No electricity.	Check for power supply.
	The power cord is not properly plugged in.	Remove and reconnect the power cord.
Unit runs but the speed is abnormal	Air inlet or air outlet is blocked.	Remove blockage.
The fan is accidentally shut down or not disconnected in correct process.	The delay start program is trigger.	Wait for over 5 seconds until the drum fan totally starts.

If troubleshooting does not resolve your problem, please contact XPOWER or other parties authorized by XPOWER for further instructions.

Technical Specification

MODEL NUMBER	FD-630D
Voltage/ Frequency	220-240V~, 50Hz
Motor Power	180W
Speed Control	Variable Speeds
Cord Length	3 m
Unit Dimension (L) x (W) x (H)	76.5 x 23.5 x 73.5 cm
Unit Weight	13.5 kg
Safety Certification	CE/UKCA

If your product(s) is not listed above, please visit www.xpower.com for more information.

XPOWER Limited Warranty

XPOWER Limited Warranty

XPOWER's Limited Warranty covers the unit (excludes POWER CORD) from defects in material and craftsmanship. The Warranty covers normal use for a term of one year from the original date of purchase including parts, labor and one way shipping. Non-contiguous states must pay for roundtrip freight. A purchase receipt must be provided.

Important!

This warranty does not cover or apply to defects due directly or indirectly to misuse, abuse, disassembly, alteration, corrosive chemicals, improper voltage, fire, flood, negligence, accident, improperly or incorrectly performed maintenance or repair, or failure to perform necessary maintenance or repair, or if the use of this product is not in compliance with the instructions and specifications for its use.

Service

Contact an XPOWER Distributor in your region for warranty service and parts replacement.



XPOWER Manufacture, INC.

668 S. 6th Ave.,
City of Industry, CA 91746, USA

Read and save these instructions
www.xpower.com | www.tx-5.com.hk

Index: EU-1-A3
Edition: 1.0.Final